

# SPA EASE



THE FUTURE OF HOT TUBS

Hot Tubs • Swim Spas • Chemicals • Filters • Covers  
Cover Lifters • Treadmills • Accessories • Safety Rails

[spaeasehottubs.com](http://spaeasehottubs.com)

# SpaEASE

## THE FUTURE OF HOT TUBS

The **SpaEASE** Brand was designed and is owned by Hot Tub Products LLC (HTP) a US company located in Connecticut since 2004. HTP is owned by the Tournas Family who created ThermoSpas Inc. in 1981, which went on to become the largest retailer of hot tubs in the world. The CEO of HTP in 2008 founded the International Hot Tub Association (IHTA) and was President for the first 2 years. The IHTA consisted of a board of directors that included Presidents and CEO's of virtually every major hot tub manufacturer in the US.

The organization helped raise the standards of hot tub production by focusing on energy efficiency and safety standards.

Today SpaEase Hot Tubs have raised the level of design and quality control, along with offering unique features found on no other hot tub brand.

Virtually every major component on a SpaEase Hot Tub, from the Acrylic Shell, Digital Control Panels, Heater, and even the Spa Pac (considered the engine to the spa) utilizes USA manufacturers. All SpaEase Steps & Safety Rails are proudly Made in the U.S.A. Even our HT brand of chemicals is manufactured in Connecticut and have been sold by HTP for over 20 years.



Visit [www.thehottubpedia.com](http://www.thehottubpedia.com) for the best answers on how to care for your spa. We are proud HT Chemicals & HT Filters were chosen as a model for this website.

# We Don't Just Build Hot Tubs

We Provide Patented Products to Help Make Your Hot Tub **Easier to Use, More Energy Efficient, and Safer to Own.**

## EASIER TO USE

### CONVERT A LIFT®

Automatic Cover Lift System

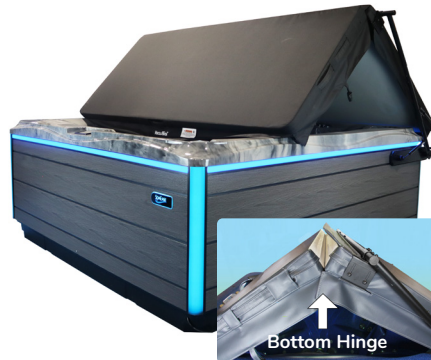


Simply Touch a Button, from in your home, and your hot tub or swim spa cover opens automatically.

## ENERGY EFFICIENT

### VacuSeal®

Cover & Lift System



Our Patented Bottom Hinge seals your cover to your hot tub preventing heat loss which saves you money.

## SAFER TO OWN

### CONVERT A LIFT®

Automatically Locks



Prevents children and any uninvited guests from entering your spa. ideal for vacation and rental homes.

## SAFER & EASIER

### SpaEASE

Hot Tub Steps



Thick Rubber Treads Add Safety & Feel Good on Your Toes. Optional Drawers make Chemical Storage Convenient.

## SAFER TO OWN

### SpaEASE

Access Rails

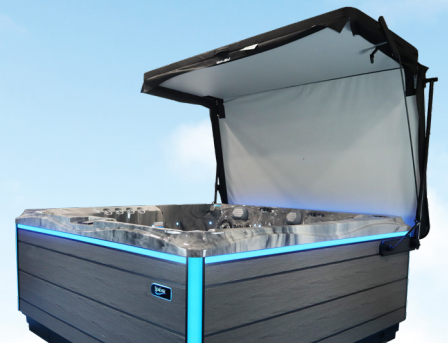


Helps You Getting In & Out of Your Spa. Plus Assists You from Moving from One Seat to Another when Using Your Spa.

## SAFER & EASIER

### VacuSeal

Easily Converts into a Canopy



Provides Protection from the Sun and the Rain, along with adding a little Privacy from the Neighbors.

**Only SpaEase Can Provide Everything You Need for Your Spa!**

# Beautiful Shells

## We Only use Made in the USA Continuous Cast Acrylic (CCA)

The exterior surface is smooth to the touch, yet durable enough to resist stress cracking and it easily withstands temperature changes from minus 50 degrees to up to 180 degrees Fahrenheit. CCA is a non-porous material which makes it simple to clean and holds its beauty for generations, while requiring very little maintenance. Many competitors commonly use OAS plastic and inexpensive composite acrylics that can easily fade over time.



# Built to Last a Lifetime

The Shell is the most important part of your spa. If virtually any other component fails, it could easily be replaced. If a Shell fails, most often you need to replace the entire spa.

To Thermoform SpaEase shells we use the most automated technology available today. And once it is formed, multiple layers of fiberglass, resin, and bonding agents are applied to protect your shell in virtually any environment.

### SPECIALIZED ACRYLIC FORMING

Assures a uniform thickness on every shell

### FIRST LAYER VINYL ESTER RESIN

This layer is sprayed on the shell to increase adhesion of the resin to the acrylic, eliminating the risk of bubbling or delamination.

### SECOND LAYER OF VINYL ESTER RESIN W/FIBERGLASS

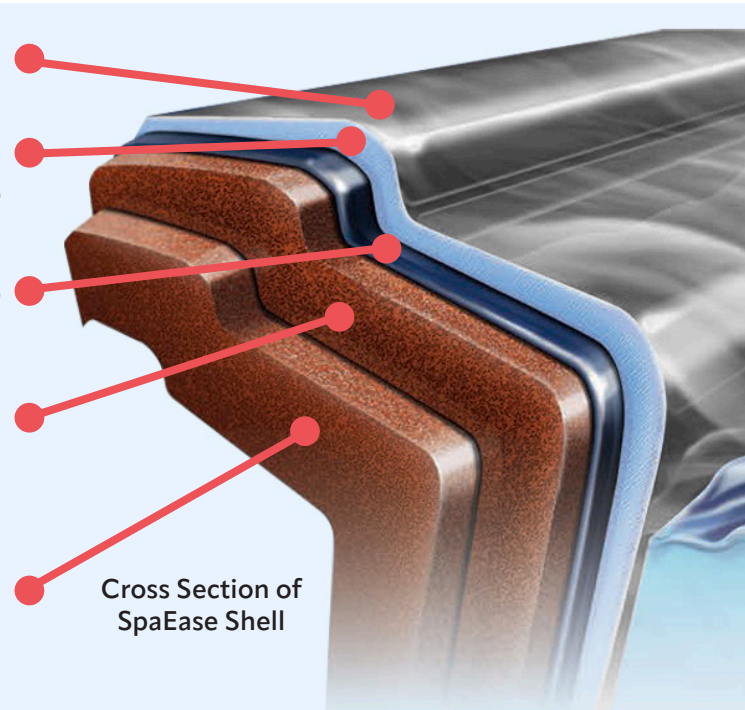
This layer is sprayed on the shell to increase its Durability, Impact Resistance and Flexibility.

### FIBERGLASS MATTING

Fiberglass Matting is used in areas that requires special attention and additional strength such as the coping, footwell and hard to reach areas.

### FIBERGLASS RESIN COMPOSITE

Our proprietary resin mixture allows more fiberglass content, creating increased structural integrity and strength.



Cross Section of SpaEase Shell

# Elegant Cabinetry & Lighting

## Designed to Enhance Your Home

SpaEase Designer Cabinets capture the warmth and look of fine furniture yet they are environmentally friendly and unaffected by the weather. You will never need to sand, stain, or refinish your hot tub cabinet to retain its beauty. Just spray it with a garden hose to make it look like new. The Color-Changing Perimeter and Corner Lighting helps create ambiance while enhancing safety in the dark.



## SpaEase Lighting Features Provide Safety & Enhance Your Spa Experience



### LED Lighted Waterfalls

Create a soothing ambiance, featuring vibrant lights and cascading water for ultimate relaxation.



### LED Fountain Streamers

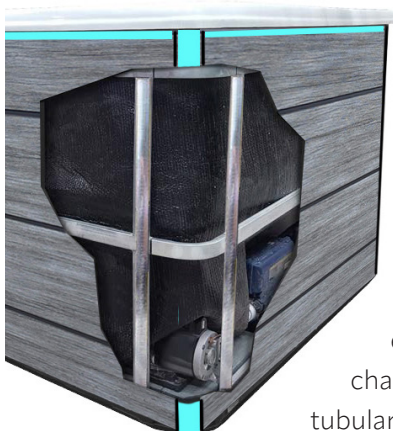
add vibrant color and relaxation to your hot tub. These dynamic water features create a mesmerizing light show.



### LED Lighted Cup Holders

Illuminate your favorite cocktail for easy locating and spectacular mood creation in the evenings.

## Stainless Steel Construction



The average hot tub weighs 800 lbs. and holds 300 gallons of water, which equates to over 3,300 lbs. of pressure on the frame. Our SpaEase Frame is built with Tubular 304 Grade Stainless-Steel making it more stable and therefore will not expand, contract, twist, or warp in changing weather conditions. Being tubular allows it to absorb the weight load of even an extra large spa filled with water.

## ABS Base w/Fiberglass Support



The base of your spa cabinet is highly dependent on both the life of your spa and the cost to operate it. Our unique Base is constructed with a rigid pan-base made of tough ABS plastic, then strengthened with fiberglass, giving the base of your spa superb structural integrity. The addition of thick, reflective insulating foil acts as a thermal barrier, designed to eliminate the cold from penetrating the spa interior and helping to lower the cost of heating your spa.

# Most Energy Efficient Spa...

Multi-Layer Insulation, Co-Generated Heat, & the VacuSeal Cover make SpaEase Designer Series the Most Energy Efficient Hot Tub.

## MULTILAYER INSULATION

### SpaEase Cover

Thick Insulated Hard Cover provides the highest industry standards for Safety and Energy Efficiency. In Cold Climate territories we encourage the option of upgrading to the VacuSeal Cover, the industry's most efficient cover.

### SpaEase Cabinet

Our attractive ThermoBoard cabinet walls are built thicker than most competitors to maximize heat retention, efficiency and strength.

### ThermoBlanket

A highly rated insulating blanket is wrapped around all four walls to further help keep heat in & cool air out. It also includes soundproofing properties for whisper quiet operation.

### ThermoShell

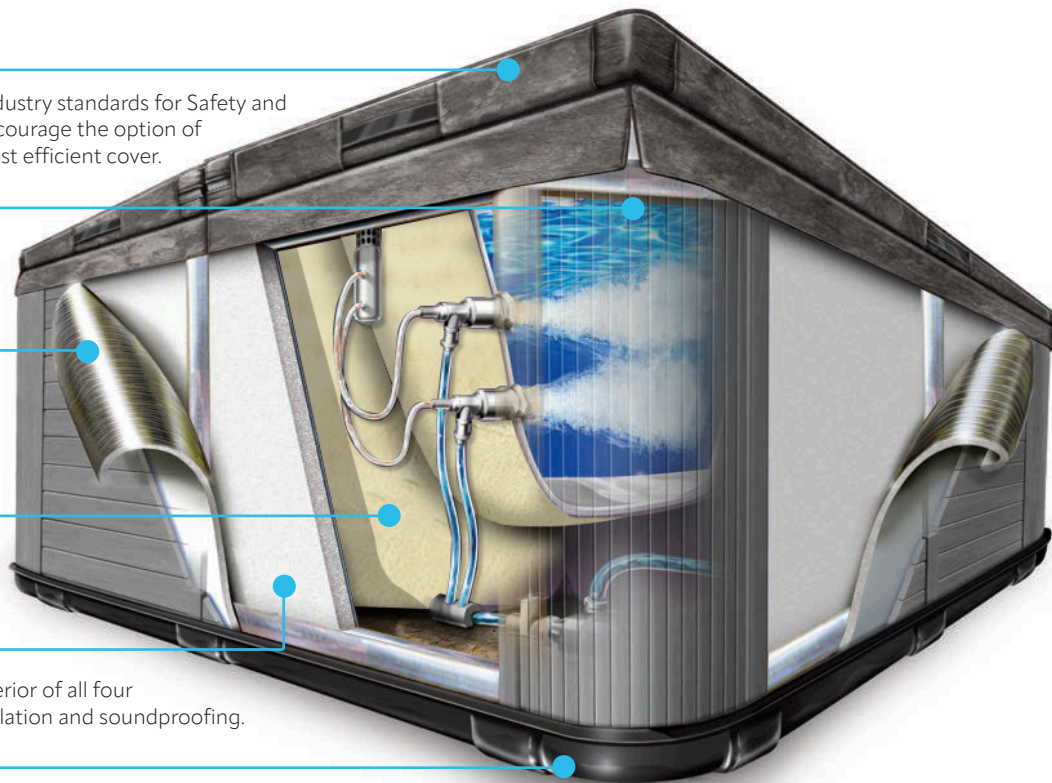
A thick ABS plastic sealed base protects the spa and its components, helps keep out rodents and has a layer of insulation for added energy savings.

### ThermoPanel

Thick Insulation panels are form-fitted onto the interior of all four walls of the spa providing an additional layer of insulation and soundproofing.

### ThermoBase

A thick ABS plastic sealed base protects the spa and its components, helps prevent rodents from entering, and includes a layer of insulation for added energy savings.

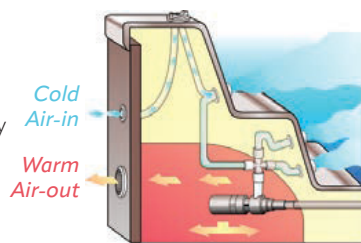


## CO-GENERATED HEAT

### The Heater & the Pumps Radiate a Great Deal of Heat

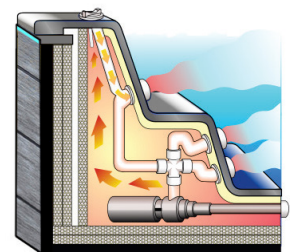
#### Competitor's Full Foam Spas

All Co-Generated Heat is wastefully vented out to prevent overheating in the small compartment that houses all the pumps and the heater in a Full Foam Spa. Plus, each "Air Valve" on the hot tub draws in cold outside air cooling the spa water when the valve is open.



#### SpaEase Co-Generated Heat

SpaEase Hot Tubs utilize Co-Generated Heat to warm both the underside of the spa's shell and all the internal plumbing of the spa. Most importantly, this warm air is used on every "Air Valve" on all SpaEase Hot Tubs, significantly reducing your energy consumption.



## TRADITIONAL COVER



Traditional Covers use Gasket that allows heat to Escape Costing You \$\$\$

## VACUSEAL COVER



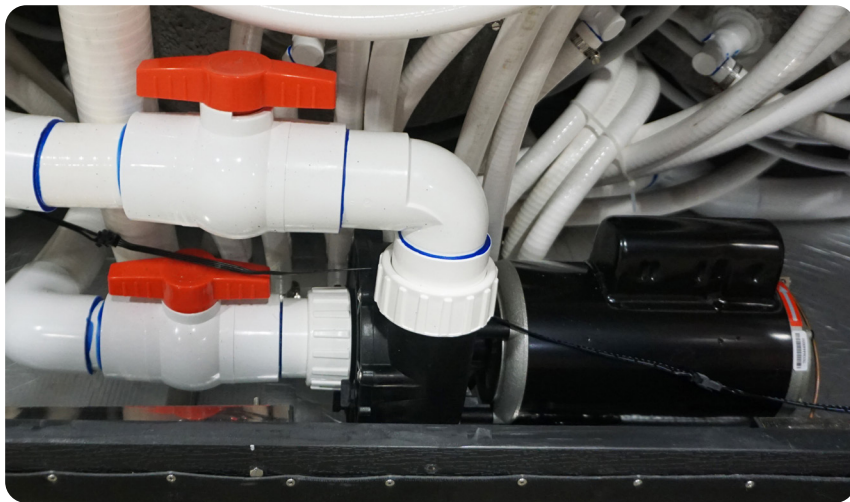
Our Patented Bottom Hinge Seals the Cover to Your Spa Preventing Heat Loss.

# Removable Panels...

## Save You Money

Not one, but all panels, on every wall, along with each layer of insulation, are designed to be easily removable. This unique concept, invented by SpaEase, along with our handy disconnect unions has made our spas simple and easy to service. Many of our competitors that sell "full-foam" spas make servicing the spa very expensive. Even the tiniest leak in a fully foamed spa could require days to repair, compared with minutes for a SpaEase.

SpaEase easy access design simplifies the removal of any component and our control panel provides diagnostic read-outs that assist in determining the cause of any malfunction.



## Disconnect Valves Save You More

SpaEase installs two disconnect hand valves on every component so that a pump or heater can easily be replaced in a matter of minutes. Competitor's spas require draining, cutting the pipes, refilling, and testing the spa. SpaEase designs spas so that even its owner could replace a component.

## Why We Don't Use Full Foam Insulation

Full Foam Spas are less expensive and easier to manufacture since they eliminate and/or significantly reduce the need for expensive fiberglass and resin. But they can be Very Expensive to the Owner.

### **VERY EXPENSIVE TO SERVICE**

If a Full Foam Spa has a leak, it can take many hours to locate the leak, and searching for it can often create new leaks. Very few spa service companies will service Full Foam Spas, especially if they did not sell it.

### **VERY LOW RESALE VALUE**

Because it is very difficult to determine if a Full Foam spa has a small leak, most spa companies will not accept it as a trade-in, and most homeowners are reluctant to purchase it.

### **ENVIRONMENTALLY UNFRIENDLY**

Since most of the spa is foam, most town dumps will not accept it which makes it expensive and/or very difficult to discard.

### **PERFECT NESTING HOME FOR RODENTS**

In cold climates many Rodents (mice, squirrels, carpenter ants, etc) and Garter Snakes can be found burrowed into the foam for the winter.



# 24/7 Filtration w/Independent Pump

**Keeps Your Water Crystal Clear 3 Times Faster and More Economical than Traditional Hot Tubs**

## Measuring the Quality of Filtration

The #1 factor in determining the quality of a filtration system is the number of times, in one day, 100% of the water passes through your filter cartridge. Traditional hot tubs use the low-speed function of the primary pump and filter the water for 4 hours, twice a day. SpaEase filters the water 24 hours a day, every day of the year. SpaEase Designer Spas turn 100% of the water in a spa 3 times more often than Traditional Hot Tubs. This number determines how quickly your water will reach clarity after it has been used.



We Hide the Filter Cartridge Behind a Piece of Acrylic Artwork

*Then We Backlight it Just for Fun*

## Benefits of 24/7 Filtration

A simple example is that when your hot tub water becomes cloudy, it could take a few days for the water to reach full clarity. With our SpaEase 24/7 System it could reach full clarity within a few hours.

## Comparing Cost of Each System

Low-Speed on the Primary Pump used on Traditional Hot Tubs draws approximately 3.5 amps per/hour and runs 8 hours each day drawing a total of 28 amps per/day. The Independent Pump used on all SpaEase Designer Spas draws .8 amps per/hour and runs 24 hours each day drawing a total of 19.2 amps per/day.

**Most Competitors offer 24/7 Filtration as an option on their deluxe models and charge approximately \$600.**

**SpaEase provides 24/7 Filtration as a standard feature on all Designer Series Spas.**

## Ozone Water Purification

Ozone is one of nature's most powerful sanitizers. It works 3,000 times faster than chlorine and is used today to sanitize most of the bottled water we drink. Many hot tub manufacturers offer 30 mg ozone as an optional feature on their spas. SpaEase provides an upgraded 50 mg Ozone as a standard feature on all our hot tubs.

## Comparing SpaEase Hot Tubs to Traditional Hot Tubs

FILTRATION & WATER PURIFICATION	TRADITIONAL	SPAEase
# of Times 100% of Water is Filtered in One Day	18	54
How Often the Filter is Operating per day	8 Hours	24 Hours
Average Amount of Amps Drawn per day	28 amps	19 amps
Cost for a 24/7 Filtration System w/Pump	\$600	Included
The Amount of Ozone produced per/hour	30 mg	50 mg

# SpaZone - Keeps Your Water Healthy & Your Spa Protected

## Traditional Ozonators

The 2 Sanitizer choices you have in keeping your water Crystal Clear and Healthy is Chlorine and Bromine. The added use of an Ozonator helps reduce up to 25% of these sanitizers. It works by converting oxygen into Ozone Gas, that is then fed directly into your spa water. But Ozone is the #1 cause of damage to Spa Pillows & Jet Fittings.



## SpaZone

**SpaZone** uses a "Mixing Tank" from the water that passes through our Filter along with the Ozone Gas from our "Ozonator" to purify the water before being sent into the spa which provides 4 Benefits.

### BENEFITS OF *SpaZone*:

1. It reduces up to 50% of your required use of Chlorine or Bromine (2 X the amount of just using a standard Ozonator)
2. Greatly reduces damage to your pillows and jet fittings.
3. Your water will have much less of an ozone scent.
4. Your spa and your spa water will be safer if used indoors.

## Enhancing Your Spa Experience



### Balboa Touch 2

Our Upscale Control Panel looks & feels like glass, but it's resilient and best of all it's extremely customer Intuitive, making operating your spa easy!



### Bluetooth Speakers

Whether your relaxing to the sound of your favorite music, or listening to a sporting event, our speakers provide a crisp sound designed to improve your spa experience .



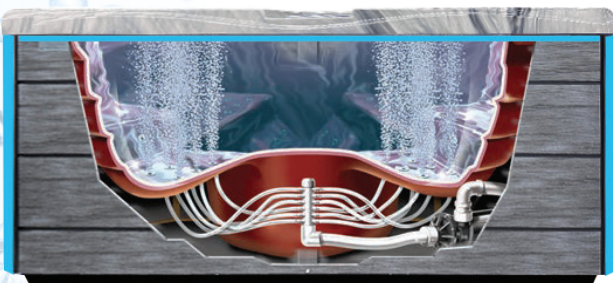
# Air Jets Provide Relaxation

*Helping You Relax,  
Relieve Stress &  
Simply Have Fun*

Air Jets provide a gentler, more relaxing massage. Obviously a favorite for children but also the choice for many adults, especially those with sensitive skin and others that don't require powerful jet therapy.



## SpaEase Bubbling System And How It works



A powerful Air Pump draws the warm air from the interior of our Thermolnsulated Cabinet, through a manifold, to a series of specially designed air jets, that turn your entire spa into a bubbling oasis. The manifold ensures an even level of bubbling activity along the perimeter of the footwell.

The comment we most often hear from adults *"It's Like Sitting in a Bucket of Champagne"*. From the kids it's simply *"Turn it Up All the Way"*. I think there may be a little child in every one of us.

*Today many major jetted bathtub manufacturers have discontinued water jets and only use air jets. Over 40% of SpaEase customers prefer Air Jets over Water Jets.*

### **New England Journal of Medicine**

*"Subject reported improved sleep and an increased general sense of well-being..."*

### **National Arthritis Foundation**

*"ideal environment for relieving arthritis pain and stiffness... relaxes tight muscles."*

### **National Sleep Foundation**

*"soaking in hot water before retiring to bed can ease the transition into deeper sleep."*

# Water Jets Provide Therapy

Most manufacturers provide 1 or 2 pumps to serve up to 5 seating areas. SpaEase provides up to 4 pumps and an adjustment valve in each seating area allowing each bather to independently control the intensity of their massage.



## Neck & Shoulder Massage

Above water neck and shoulder jets that can easily be turned on or off along with an adjustable intensity valve. They are guaranteed to relieve the stress we all feel at the end of a difficult day.



## Rain Jets on Your Back

Imagine the feeling of 30 tiny jets massaging every inch of your back, at just the right intensity, where you simply will not want to move from.



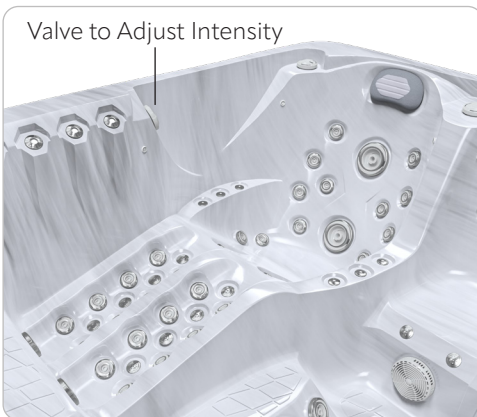
## A Foot Massage

Once we learned a foot massage relaxes your entire body, we decided to include foot jets in virtually every seating area.



## The Captain's Chair

Imagine a recliner that massages your neck & shoulders, upper & lower back, your calves, & includes jetted armrests for those with Carpal Tunnel.



## Full Body Lounge

Stretch out, relax and find out how it feels to have jets massage almost every inch of your body with a convenient valve to adjust the intensity.



### MAYO Clinic

"Peak heart rate was lower during hot tub immersion vs than for exercise..."

### British Journal of Rheumatology

"study suggests an immediate and 6-month benefit of spa therapy in chronic LBP"

### Independent Studies

"releases endorphins, the body's natural feel good chemical..."



### 3 SEATING AREAS

Maui is the perfect choice for someone seeking a compact hot tub that is loaded with features. The 35" height allows it to pass through most any standard exterior doorway giving you choices most hot tubs cannot. Two lounges side by side allow both bathers to view the stars together and a cozy center seat transforms the Maui into a conversational seating area.

### SPECIFICATIONS

**Dimensions:** 86" x 65" x 35"

**Dry Weight:** 660 lbs.

**Water Capacity:** 238 Gallons

**88 Stainless Steel Jets:**

- 76 Water Jets • 12 Air Jets

**4 Pumps:**

- 2 (3HP) Water Pumps
- 1 (.35HP) Filtration Pump
- 1 (700W) Air Pump

**Required Electrical:** 220V 60 Amp

### SPECIAL FEATURES OVERVIEW



#### Lounge Choice

Each lounge is designed for a different height, while still providing each bather with an amazing full body massage. When all alone you'll find the joy in stretching out in one and or curling up in the other.

#### Opposite Center Seat

A favorite for many that prefer a slightly raised seating area.



#### Horizontal Cabinetry

With perimeter lighting in a variety of colors to enhance your home's exterior.

### STANDARD FEATURES

- Balboa Touch 2 Control Panel
- Air Bubbling System
- Multi-Layer Thermo-Insulation
- Multi-Layer Insulated Acrylic Shell
- Stainless Steel Frame
- SpaZone Water Purification System
- 24/7 Filtration w/Independent Pump
- Two Bluetooth Fixed Speakers
- Multi-Color Lighted Waterfall
- Multi-Color Water Streamers
- Built-In Lighted Cup Holders
- Ultra-Thick Built-In Pillows
- Insulated & Sealed ABS Base
- Bottom Drain in the Footwell
- HT Chemical Starter Kit

### AVAILABLE OPTIONS

- VacuSeal Cover & Lifter
- ConvertALift Automatic Lifter
- Choice of SpaEase Safety Rails
- Choice of SpaEase Steps



### 5 SEATING AREAS

The Martinique is perfect for entertaining guests, especially when more than one bather is seeking the comfort of a lounge with each having their own perfectly positioned valve to control the intensity of their massage. Along with 3 therapy seats each providing jets to massage both your back, your calves, and one special seat for your neck and shoulders. When bathing alone you will enjoy trying to decide, each day, which seat you love the best.

### SPECIFICATIONS

**Dimensions:** 91" x 91" x 37"

**Dry Weight:** 840 lbs.

**Water Capacity:** 370 Gallons

**123 Stainless Steel Jets:**

- 111 Water Jets • 12 Air Jets

**5 Pumps:**

- 3 (3HP) Water Pumps
- 1 (700W) Air Pump
- 1 (.35HP) Filtration Pump

**Required Electrical:** 220V 60 Amp

### SPECIAL FEATURES OVERVIEW

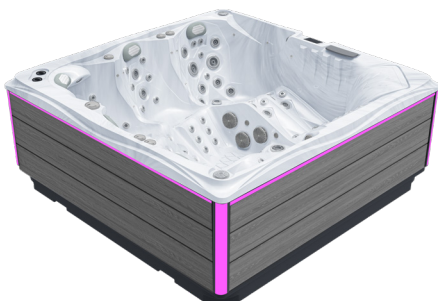
#### 2 Recliners & Captain Seat

Each provides an incredible jetted massage for both your back, legs, and feet along with armrests for added comfort. The center seat offers an above water neck and shoulder massage with a few extra jets to make it just a little more special.



#### 2 Lounge Seats

Though one is slightly longer than the other, both offer an amazing full body massage and there is a conveniently located valve to control the intensity.



#### Horizontal Cabinetry

With perimeter lighting in a variety of colors to enhance your home's exterior.

### STANDARD FEATURES

- Balboa Touch 2 Control Panel
- Air Bubbling System
- Multi-Layer Thermo-Insulation
- Multi-Layer Insulated Acrylic Shell
- Stainless Steel Frame
- SpaZone Water Purification System
- 24/7 Filtration w/Independent Pump
- Two Bluetooth Fixed Speakers
- Multi-Color Lighted Waterfall
- Multi-Color Water Streamers
- Built-In Lighted Cup Holders
- Ultra-Thick Built-In Pillows
- Insulated & Sealed ABS Base
- Bottom Drain in the Footwell
- HT Chemical Starter Kit

### AVAILABLE OPTIONS

- VacuSeal Cover & Lifter
- ConvertALift Automatic Lifter
- Choice of SpaEase Safety Rails
- Choice of SpaEase Steps



## 6 SEATING AREAS

The Fiji is perfect for those seeking a mid-sized spa with a lounge that provides a full body massage with a very convenient control valve so you can control the pressure. Choose between 2 therapy seats, one with 30 jets massaging your back, or the other that includes above water jets that relieve all the tension in your neck and shoulders. There is also a raised cool down seat along with 2 perfectly positioned blue tooth speakers.

## SPECIFICATIONS

**Dimensions:** 84" x 84" x 36"

**Dry Weight:** 660 lbs.

**Water Capacity:** 238 Gallons

**89 Stainless Steel Jets:**

- 75 Water Jets • 14 Air Jets

**4 Pumps:**

2 (3HP) Water Pumps

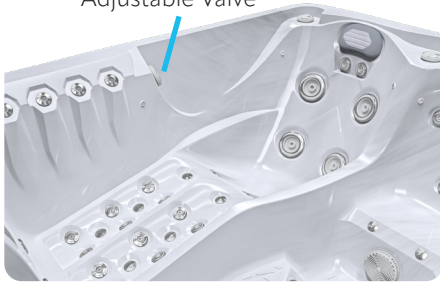
1 (700W) Air Pump

1 (.25HP) Filtration Pump

**Required Electrical:** 220V 60 Amp

## SPECIAL FEATURES OVERVIEW

Adjustable Valve

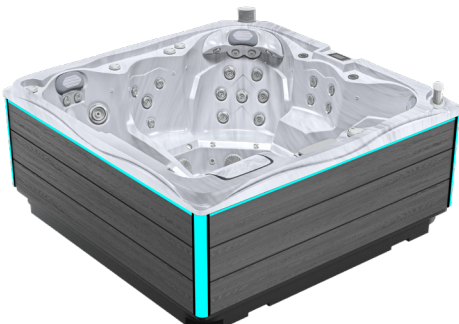


### The Perfect Lounge

Fully jetted for therapy, armrests for comfort, streamers for entertainment, and a convenient valve for adjusting intensity.

### Rain Jet Seat

30 Jets cover your entire back area for the most incredibly relaxing experience all while getting a neck and shoulder massage.



### Horizontal Cabinetry

With perimeter lighting in a variety of colors to enhance your home's exterior.

## STANDARD FEATURES

- Balboa Touch 2 Control Panel
- Air Bubbling System
- Multi-Layer Thermo-Insulation
- Multi-Layer Insulated Acrylic Shell
- Stainless Steel Frame
- SpaZone Water Purification System
- 24/7 Filtration w/Independent Pump
- Two Bluetooth Fixed Speakers
- Multi-Color Lighted Waterfall
- Multi-Color Water Streamers
- Built-In Lighted Cup Holders
- Ultra-Thick Built-In Pillows
- Insulated & Sealed ABS Base
- Bottom Drain in the Footwell
- HT Chemical Starter Kit

## AVAILABLE OPTIONS

- VacuSeal Cover & Lifter
- ConvertALift Automatic Lifter
- Choice of SpaEase Safety Rails
- Choice of SpaEase Steps



### 5 SEATING AREAS

The Aruba is full-size spa with a lounge that encapsulates your body with comfort and a series of jets that will massage away the pain. Plus, two Therapy Seats, each providing wraparound jetted armrests and each offering their own unique massage. One with a 30-jet back massage, the other with above water neck and shoulder jets and both positioned to provide a relaxing foot massage. A variety of other seating areas help make the Aruba a perfect home resort.

### SPECIFICATIONS

**Dimensions:** 91" x 91" x 36"

**Dry Weight:** 840 lbs.

**Water Capacity:** 370 Gallons

**130 Stainless Steel Jets:**

- 112 Water Jets • 18 Air Jets

**5 Pumps:**

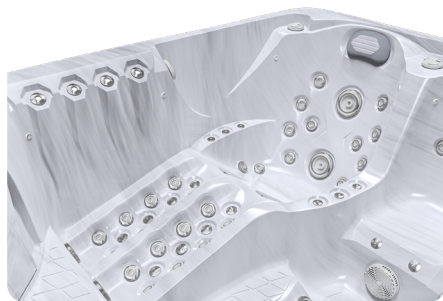
3 (3HP) Water Pumps

1 (700W) Air Pump

1 (.35HP) Filtration Pump

**Required Electrical:** 220V 60 Amp

### SPECIAL FEATURES OVERVIEW

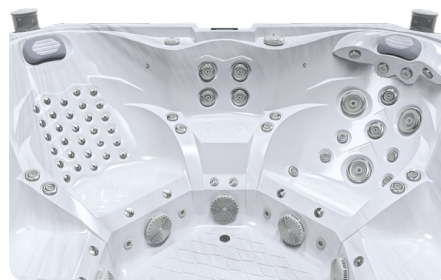
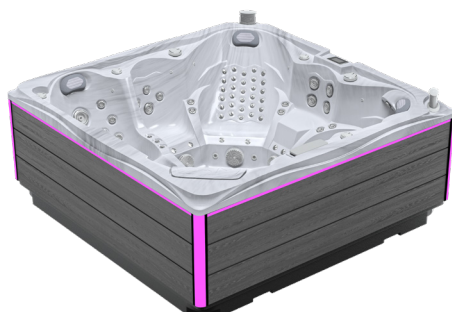


#### Advanced Lounge

Massages virtually every inch of your body and includes a convenient valve that allows you to adjust the intensity.

#### Neck & Shoulders

In the Lounge and in each of the Therapy Seats these above water jets magically relieve any pain along your neck and shoulders.



#### Horizontal Cabinetery

With perimeter lighting in a variety of colors to enhance your home's exterior.

### STANDARD FEATURES

- Balboa Touch 2 Control Panel
- Air Bubbling System
- Multi-Layer Thermo-Insulation
- Multi-Layer Insulated Acrylic Shell
- Stainless Steel Frame
- SpaZone Water Purification System
- 24/7 Filtration w/Independent Pump
- Two Bluetooth Fixed Speakers
- Multi-Color Lighted Waterfall
- Multi-Color Water Streamers
- Built-In Lighted Cup Holders
- Ultra-Thick Built-In Pillows
- Insulated & Sealed ABS Base
- Bottom Drain in the Footwell
- HT Chemical Starter Kit

### AVAILABLE OPTIONS

- VacuSeal Cover & Lifter
- ConvertALift Automatic Lifter
- Choice of SpaEase Safety Rails
- Choice of SpaEase Steps



### 4 SEATING AREAS

The Barbados is the perfect choice for entertaining another couple or for sharing it with your kids. Each seat includes wraparound jetted armrests, along with a slightly different depth and a uniquely different massage. One seat provides a 30 jet back massage while 2 others offer above water jets for your neck and shoulders. In the center of the footwell is our powerful Volcano Jet providing an amazing foot massage.

### SPECIFICATIONS

**Dimensions:** 84" x 84" x 37"

**Dry Weight:** 660 lbs.

**Water Capacity:** 238 Gallons

**80 Stainless Steel Jets**

• 72 Water Jets • 8 Air Jets

**4 Pumps:**

2 (3HP) Water Pumps

1 (.35HP) Filtration Pump

1 (700W) Air Pump

**Required Electrical:** 220V 60 Amp

### SPECIAL FEATURES OVERVIEW

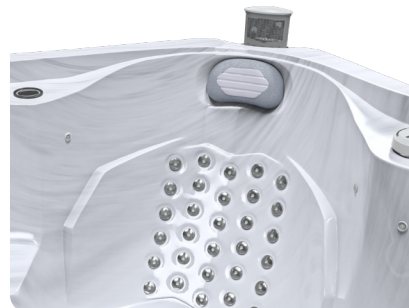


#### Neck & Shoulders Jets

These powerful above waterline Jets are positioned to target your neck & shoulders to ease tension.

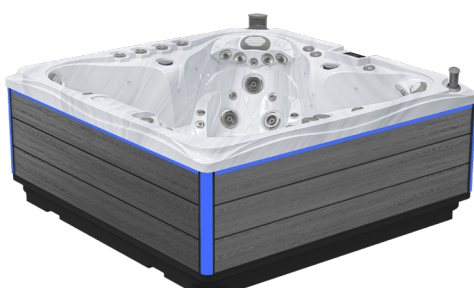
#### Rain Jet Seat

30 Jets cover your entire back area for the most incredibly relaxing experience all while getting a neck and shoulder massage.



#### Horizontal Cabinetry

With perimeter lighting in a variety of colors to enhance your home's exterior.



### STANDARD FEATURES

- Balboa Touch 2 Control Panel
- Air Bubbling System
- Multi-Layer Thermo-Insulation
- Multi-Layer Insulated Acrylic Shell
- Stainless Steel Frame
- SpaZone Water Purification System
- 24/7 Filtration w/Independent Pump
- Two Bluetooth Fixed Speakers
- Multi-Color Lighted Waterfall
- Multi-Color Water Streamers
- Built-In Lighted Cup Holders
- Ultra-Thick Built-In Pillows
- Insulated & Sealed ABS Base
- Bottom Drain in the Footwell
- HT Chemical Starter Kit

### AVAILABLE OPTIONS

- VacuSeal Cover & Lifter
- ConvertALift Automatic Lifter
- Choice of SpaEase Safety Rails
- Choice of SpaEase Steps



### 7 SEATING AREAS

The Bahama is a full-size spa that is ideal for those that love to entertain. Four guests will immediately presume they have been given the best seat in the spa, because each offers a unique spa experience and it's difficult to choose which is best. There are 3 more seating areas, each with their own back massage along with a powerful Volcano Jet in the center of the footwell providing an amazing foot massage. And don't forget the Bubbling System, which is a favorite on our Open Seating Spas.

### SPECIFICATIONS

**Dimensions:** 91" x 91" x 37"

**Dry Weight:** 840 lbs.

**Water Capacity:** 370 Gallons

**116 Stainless Steel Jets:**

- 102 Water Jets • 14 Air Jets

**5 Pumps:**

3 (3HP) Water Pumps

1 (700W) Air Pump

1 (.25HP) Filtration Pump

**Required Electrical:** 220V 60 Amp

### SPECIAL FEATURES OVERVIEW



#### Different Massage in Every Seat

Imagine 2 reclining chairs giving you a warm water massage on your back, legs, and feet. Then move to the other side and get the most incredible neck and shoulder massage.

#### The Perfect Seat

Put your head on the pillow with knees elevated, touch a button and get a full body massage where you can control the intensity.



#### Horizontal Cabinetry

With perimeter lighting in a variety of colors to enhance your home's exterior.

### STANDARD FEATURES

- Balboa Touch 2 Control Panel
- Air Bubbling System
- Multi-Layer Thermo-Insulation
- Multi-Layer Insulated Acrylic Shell
- Stainless Steel Frame
- SpaZone Water Purification System
- 24/7 Filtration w/Independent Pump
- Two Bluetooth Fixed Speakers
- Multi-Color Lighted Waterfall
- Multi-Color Water Streamers
- Built-In Lighted Cup Holders
- Ultra-Thick Built-In Pillows
- Insulated & Sealed ABS Base
- Bottom Drain in the Footwell
- HT Chemical Starter Kit

### AVAILABLE OPTIONS

- VacuSeal Cover & Lifter
- ConvertALift Automatic Lifter
- Choice of SpaEase Safety Rails
- Choice of SpaEase Steps



### 2 LUXURY THERAPY SEATS + 1 EXERCISE SEAT PLUS, BENCH SEATING FOR FAMILY & FRIENDS

The Olympian includes 2 "Therapy Seats" with wraparound jetted armrests with each offering their own unique back massage. The Center Bench Seat is perfectly positioned for those seeking a workout to turn your spa into amazing fitness center. A large Swim Area allows you to swim against a current or relax on floating lounge. "Bench Seating" on each side makes it comfortable for up to 10 guests and our 4 Pop-Up Bluetooth Speakers help transform our Swim Spa into an Entertainment Center. More importantly our Swim Spa is designed for you and your family to use any day of the year to stay fit and have place at home to escape, relax, and enjoy.

#### SPECIFICATIONS

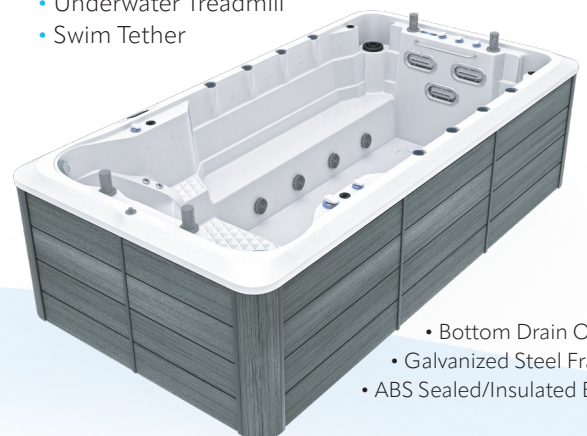
- Dimensions:** 91" x 169" x 54"
- Dry Weight:** 2160 lbs.
- Water Capacity:** 1374 Gallons
- 59 Stainless Steel Jets**
- 5 Pumps**
- Required Electrical:** 220V 60 Amp

#### STANDARD FEATURES

- Balboa Touch 2 Control
- 24/7 Filtration w/Circ Pump
- 36" Stainless Steel Rail
- SpaZone Water Purification System
- Four Bluetooth Pop-Up Speakers
- 8 Lighted Fountain Jets
- 4 LED Lighted Cup Holders

#### AVAILABLE OPTIONS

- VacuSeal Cover & Lifter
- CovertALift Automatic Cover Conversion
- Underwater Treadmill
- Swim Tether



- Bottom Drain Outlet
- Galvanized Steel Frame
- ABS Sealed/Insulated Base

4 Pop-Up Bluetooth Speakers



2 Therapy & 1 Exercise Seat





## TURBINE POWERED SWIM CURRENT

The Olympian Pro offers all the benefits of our Olympian Swim Spa. Dual Therapy Seats, Center Exercise Seat, and Bench Seating for Guests, with one major upgrade. For those truly seeking a "Swim Machine" we have removed the traditional Swim Spa power jets and added a Turbo Engine in its place.

## BENEFITS OF A TURBINE SYSTEM:

### **Smoother Water Flow**

Provides a steadier flow of water offering a smoother swimming experience.

### **More Customizable**

Adjustable water speed is ideal for those interested in building strength and endurance.

### **Quieter Sound**

Perfect for those seeking a more peaceful and relaxing swimming experience.

### **More Natural Swim**

Creates a more natural water flow that feels as if you were swimming in open water.

## SPECIFICATIONS

**Dimensions:** 91" x 197" x 54"

**Dry Weight:** 2400 lbs.

**Water Capacity:** 1374 Gallons

**56 Stainless Steel Jets**

**2 Pumps**

**Turbine System**

**Required Electrical:** 220V 60 Amp

## STANDARD FEATURES

- Balboa Touch 2 Control
- 24/7 Filtration w/Circ Pump
- 36" Stainless Steel Rail
- SpaZone Water Purification System
- Four Bluetooth Pop-Up Speakers
- 8 Lighted Fountain Jets
- 4 LED Lighted Cup Holders

## AVAILABLE OPTIONS

- VacuSeal Cover & Lifter
- CovertALift Automatic Cover Conversion
- Underwater Treadmill
- Swim Tether

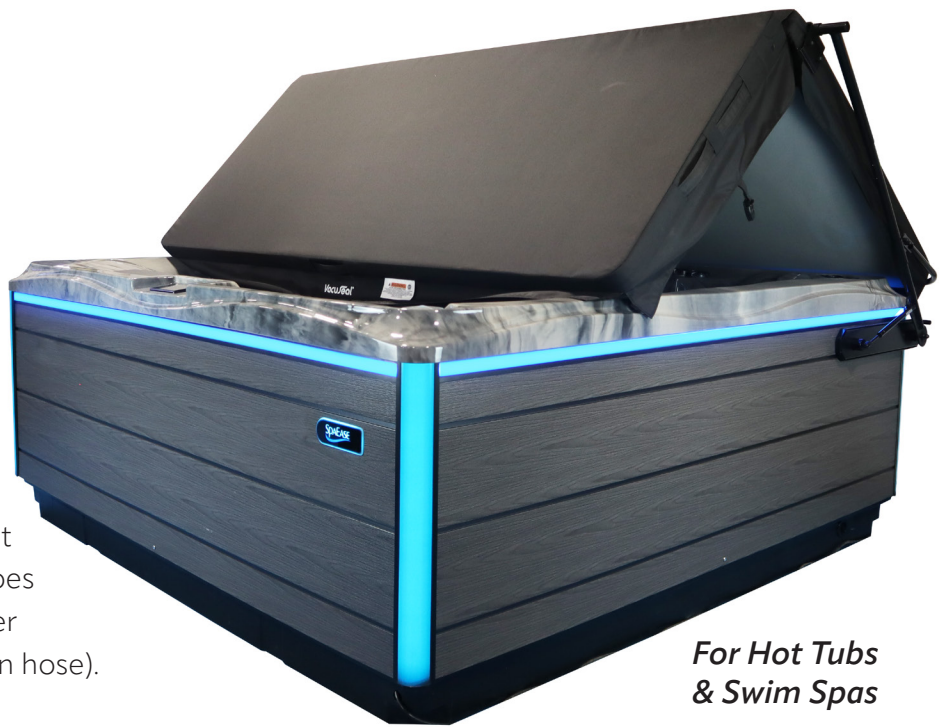
***Turbine Power is the Favorite of Serious Swimmers***

# VacuSeal® Cover & Cover Lifter

*Our patented VacuSeal System provides many benefits!*

## ThermoGuard Exterior

Our Polyester Fabric is More Attractive than Vinyl, 25% Lighter (making it easier to open and close), More Tear Resistant (so it will last longer and save you money), and Does Not Require You to Apply a Vinyl Conditioner every 3 months (simply clean it with a garden hose).



*For Hot Tubs & Swim Spas*

## Easiest to Use

The VacuSeal Cover with our patented bottom hinge design allows you to open the cover in One Motion. The VacuSeal Lifter with our pneumatic shocks makes it Easy to Open and just as Easy to Close. But most importantly, when it closes, it always goes back to the original position so there is no need for shifting the cover after you close it. This is major benefit for hot tubs and considered by many to be a necessity for Swim Spas.



## Saves You Money



Our Patented Bottom Hinge Seals the Cover to Your Spa to Prevent Heat Loss. Other Covers Need a Center Gasket which is where Heat is Lost, Costing You \$\$\$.



## Converts Into a Canopy

Provides Protection from the Sun, More Privacy from the Neighbors, and a Lot of Fun to just Watch the Rain Fall, without Feeling a Drop.



## Enhanced View When Open



Only Cover where you face the attractive exterior side.

Within months chemical fumes discolor the underside.

**TRADITIONAL COVERS:** The Top Hinge requires you to fold the cover both before opening and closing and shifting it each time you close it, to make certain it covers all the surface of your shell (prolonged exposure to sun can damage your acrylic).

## Converts Your VacuSeal Into an Automated System

*Opens Your Hot Tub Cover  
or Swim Spa Cover  
from Up To 100' Away  
at the touch of a Button!*

ConvertALift is an option on all SpaEase Designer Series Spas



## Provides Many Benefits for Your Spa

### FOR SAFETY



When You Close Your Cover it Automatically Locks Keeping Children Safe.

### FOR CONVENIENCE



VacuSeal + ConvertALift Allows You to Open Your Cover from In Your Home or up to 150' away.

### FOR PROTECTION



Helps Prevent Uninvited Guests at Vacation & Rental Homes from Using Your Spa

### FOR ENERGY SAVINGS



Swim Spa Covers Require 2 People, With Our Cover, Only One is Needed

FOR INFO & PRICING ON VACUSEAL & CONVERTALIFT VISIT [CONVERTALIFT.COM](http://CONVERTALIFT.COM)

# Additional Options for Hot Tubs:

**Classic Step** 26"W, 22.5"D, 14"H

## Matching Wrap-Around Tread & Riser

Matching Wrap Around Tread & Riser. Step includes black legs & a choice of Grey, Black or Espresso Treads.

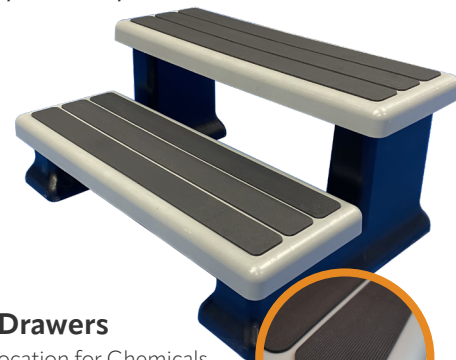
- Slip Resistant Treads
- Tested to Hold Over 800 lbs
- Easily Locks Together in Seconds
- Available in 3 Colors



**Designer Step** 36"W, 25.5"D, 16"H

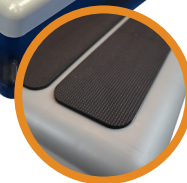
## Stylish Design, Sturdy Construction

Wide enough for two adults & strong enough for four. This attractive Two-Tone Step includes black legs and a choice of Grey, Black or Espresso Treads.



## Optional Drawers

Convenient Location for Chemicals and Accessories. Improve the Spa Experience by Eliminating Having to Carry an Armful of Chemicals.



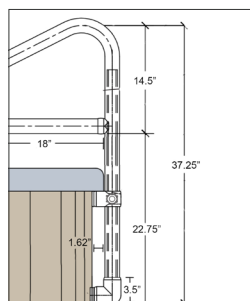
Soft Rubber Treads



## SpAEASE Safety Rails

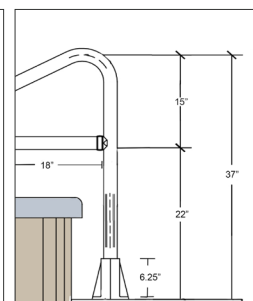
Makes Entry & Exit Safer

SM-36 SIDE MOUNT



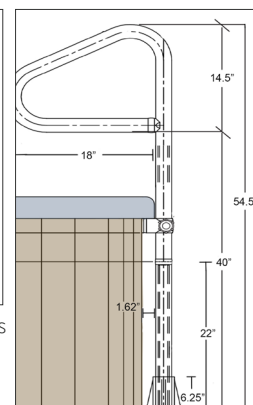
Ideal for any size Hot Tub or Swim Spa. Easy Install

DM-36 DECK MOUNT



Ideal for In-ground Hot Tubs or Swimming Pools.

DM-54 DECK MOUNT



Ideal for Portable Hot Tubs Up to 42" Tall

No Grounding Required

## Built to Last Forever

The Only Rails Guaranteed Not to Rust, Pit, or Discolor. They will Look Brand New for Many Years, No Matter What the Climate is.



## Chemicals Starter Kits

Bromine

Chlorine



Your Choice of Bromine or Chlorine

# Additional Options for Swim Spas:

## Aquasizer Underwater Treadmill

### *The Perfect Exercise for Swim Spas*

Ideal for Swim Spas & Pools (Inground & Above Ground)

TRANSFORMS INTO AN EXERCISE MACHINE

- Walk or Run at any pace.
- Safe for All Ages
- Go Forward & Backward
- No Motorized Equipment
- Cardiovascular Workout
- Build Strength & Endurance



Wheels for Transport    Easy Entry & Removal    Walk/Run at Your Pace

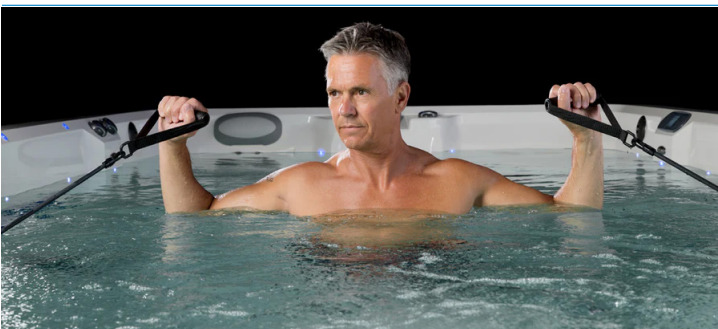
The Stainless-Steel Rail easily slides out and the Base can remain in the water for a full season, then remove, rinse off, and reinstall.

## Swim Tether

**Excellent Training for Children Learning to Swim and for Guests Not Used to Swimming Against a Current.**

Introducing the ALL-NEW Swim Tether 3. Larger diameter poles and better fit and finish at the connection points make this the most robust tether system we've ever developed.

Designed to provide a unique resistance workout for swimmers of all skill levels. Quickly install and assemble to swim in most swim spas and swimming pools.



## Workout Handles

Add handles to your existing Swim Tether installation for great arm and chest workouts. Boost your swim workout with highly-effective arm and chest exercises by simply adding our workout handles to your current Swim Tether setup. Achieve more defined and toned arms and chest while engaging your entire body in the water.



## Rowing Exercise Package

Enhance your swim spa with our durable row bars - perfect for full-body, low-impact workouts. Adjustable, easy to install, and ideal for all fitness levels.

Designed to elevate your swim spa experience, these bars are a must-have for any fitness enthusiast. Whether your spa came without a row kit or you're looking to upgrade, our product is the perfect solution.



